

FxPro
Trade Forex Like a Pro



FxPro
web Trader

User Guide

Table of Contents

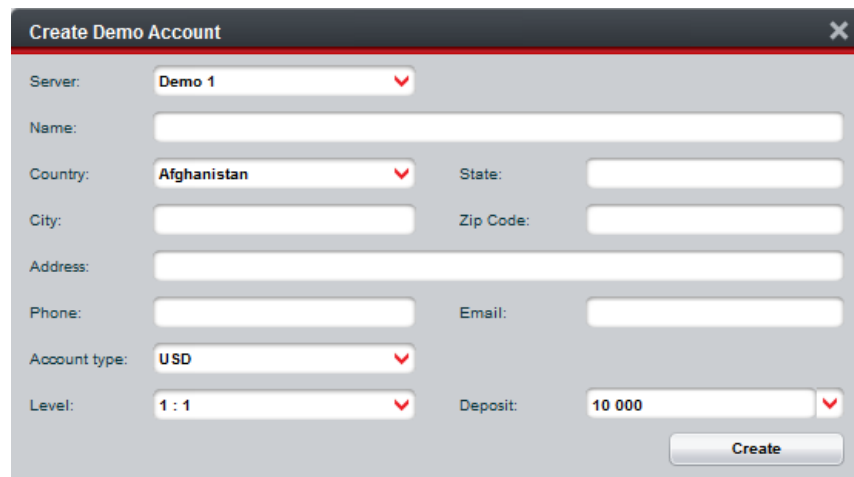
1.0 Create Demo Account	3
2.0 How to Login	4
3.0 Main Areas of the Web Trader.....	5
3.1 The Main Tabs.....	5
3.1.1 Market Watch	6
3.1.2 My Favorites.....	7
3.1.3 Add Favorites	8
3.1.4 Spot Panes.....	8
3.1.5 Charts	9
3.1.6 Adding a Chart.....	9
3.1.7 Using Charts	10
3.1.8 Chart Options	11
3.1.9 Indicators	12
4.0 Trades.....	14
4.1 Opening a New Order	14
4.2 Instant Execution	15
4.3 Pending Orders	16
4.4 Modify/Close an Order	17
4.5 Partially Close Order	18
5.0 News.....	18
6.0 Mail	19
7.0 History.....	19
8.0 Journal.....	20
9.0 Customizing your Web Trader	21

1.0 Create Demo Account

First you must go to the following URL - <https://webtrader.fxpro.com/>

You will come to a log in screen where you are asked to insert your login number, password as well as selecting your server.

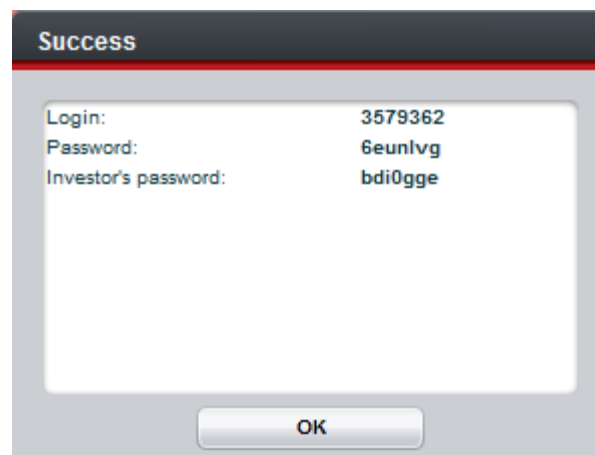
From the log in screen you have the ability to open new Demo accounts. You will be required to submit a small registration form and then once you click 'Create' your account details will be provided for you.



The screenshot shows a 'Create Demo Account' dialog box with the following fields and values:

Server:	Demo 1		
Name:			
Country:	Afghanistan	State:	
City:		Zip Code:	
Address:			
Phone:		Email:	
Account type:	USD		
Level:	1 : 1	Deposit:	10 000

There is a 'Create' button at the bottom right of the form.

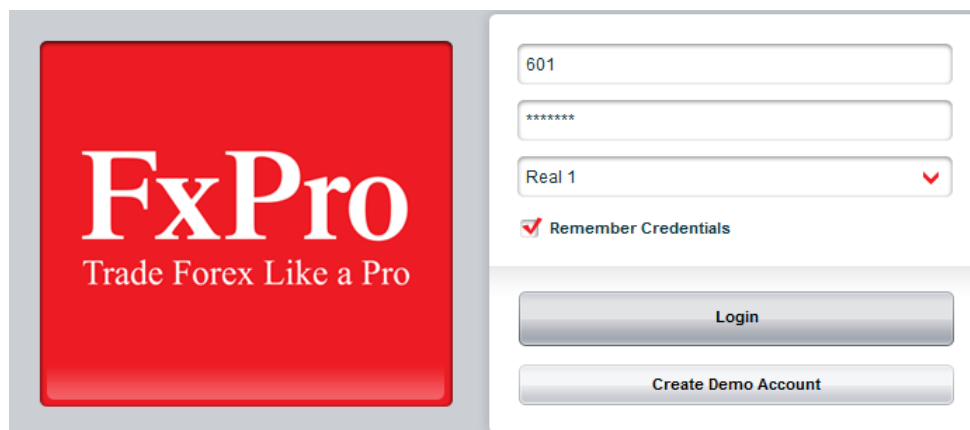


The screenshot shows a 'Success' dialog box with the following information:

Login:	3579362
Password:	6eunlvg
Investor's password:	bdi0gge

There is an 'OK' button at the bottom center of the dialog box.

2.0 How to Login



The login form features the FxPro logo on the left and a right-hand panel with input fields. The first field contains '601', the second contains '*****', and the third is a dropdown menu set to 'Real 1'. Below these is a checked 'Remember Credentials' checkbox, a 'Login' button, and a 'Create Demo Account' button.

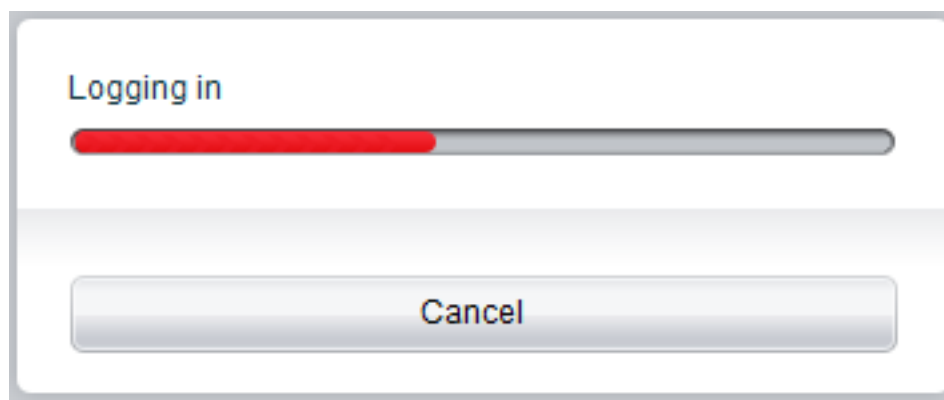
In order to log in to your account, click on the text fields to edit and input your login and password:

Login – Your trading account login

Password – Your trading account password

Servers – By clicking on the **'Server'** button you have the option of selecting your desired server.

After entering your account login details, click on the **'Login'** button.



Once clicking on the login button it will attempt to connect to the server and log you into your trading account using the Web Trader. If you have successfully logged in you will see a screen like this:



3.0 Main Areas of the Web Trader

These are the main areas of the Web Trader Platform:

- **Market Watch** – This area lists all the available trading instruments with all their rates
- **Favorites** – The Favorites window is where your customized and preferred instruments are displayed. Your Favorites are shown as Spot panes for quick trading
- **Charts** – Where your selected charts will be displayed and functional from
- **Trades** – This window displays all your current open positions and pending orders
- **News** - This window shows you Live Market News
- **Mail** – Shows MT4 internal Mail
- **History** - Gives you every closed trade you have placed and the ability to browse different date ranges
- **Journal** – Shows all the event records

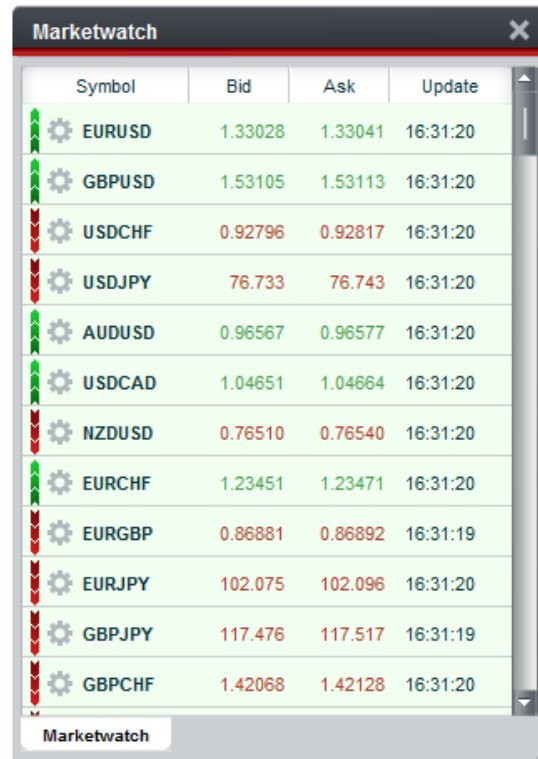
3.1 The Main Tabs

The Main tabs are situated at the very top of the Web Trader screen.



3.1.1 Market Watch

The **Market Watch** window displays, all tradable instruments. From within the **Market Watch** you have the ability to select any tradable instrument.

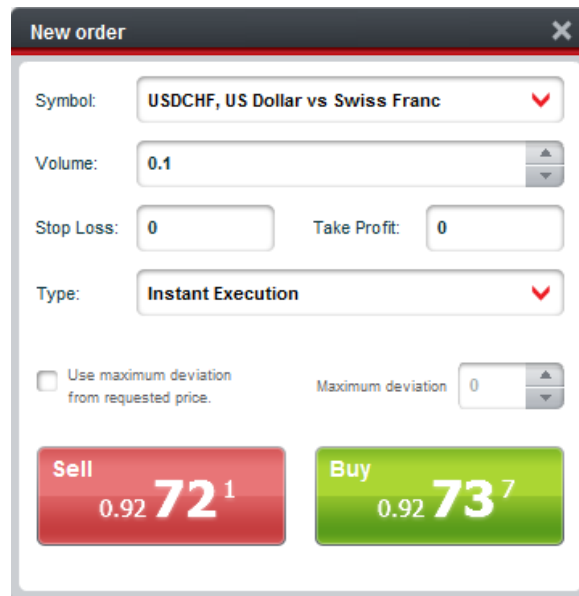


Symbol	Bid	Ask	Update
EURUSD	1.33028	1.33041	16:31:20
GBPUSD	1.53105	1.53113	16:31:20
USDCHF	0.92796	0.92817	16:31:20
USDJPY	76.733	76.743	16:31:20
AUDUSD	0.96567	0.96577	16:31:20
USDCAD	1.04651	1.04664	16:31:20
NZDUSD	0.76510	0.76540	16:31:20
EURCHF	1.23451	1.23471	16:31:20
EURGBP	0.86881	0.86892	16:31:19
EURJPY	102.075	102.096	16:31:20
GBPJPY	117.476	117.517	16:31:19
GBPCHF	1.42068	1.42128	16:31:20

The **Market Watch** Window displays the following criteria on each tradable instrument:

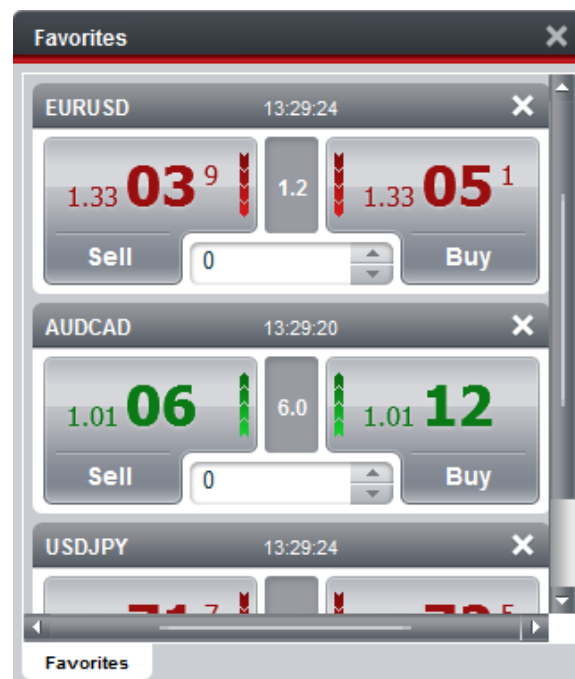
- Symbols
- *Bid* and *ask* rates
- *Last Update Time*

Double-clicking on any tradable symbol will open up a new order like this:



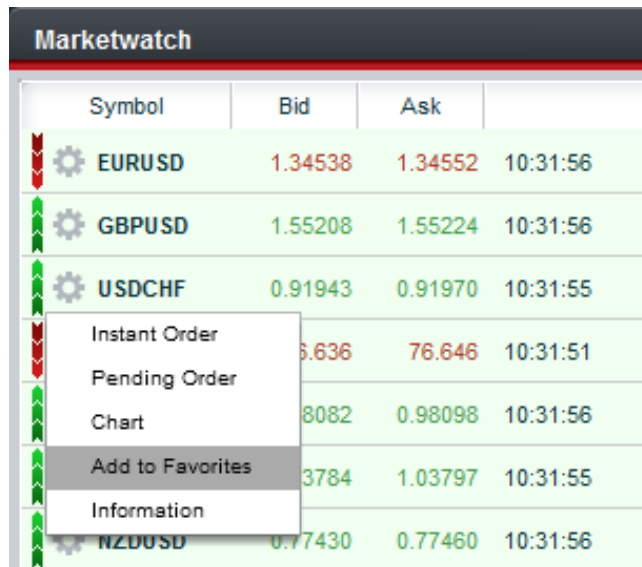
3.1.2 My Favorites

The **Favorites** area displays your preferred trading instruments. To open the My Favorites window you must click on the favorites Logo found at the top of the platform.



3.1.3 Add Favorites

To add favorites to your Favorites window within the Web Trader Platform you must select the options icon next to the symbol you wish to add and click on 'Add to Favorites'.



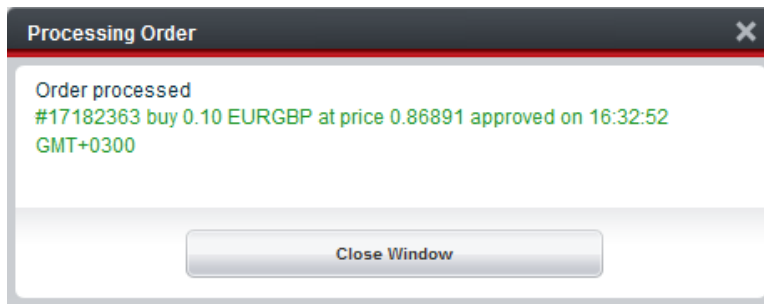
Symbol	Bid	Ask	
EURUSD	1.34538	1.34552	10:31:56
GBPUSD	1.55208	1.55224	10:31:56
USDCHF	0.91943	0.91970	10:31:55
	6.636	76.646	10:31:51
	8082	0.98098	10:31:56
	3784	1.03797	10:31:55
NZDUSD	0.77430	0.77460	10:31:56

When deciding to remove any of your favorites, simply click on the 'X' next to the favorite you wish to close.



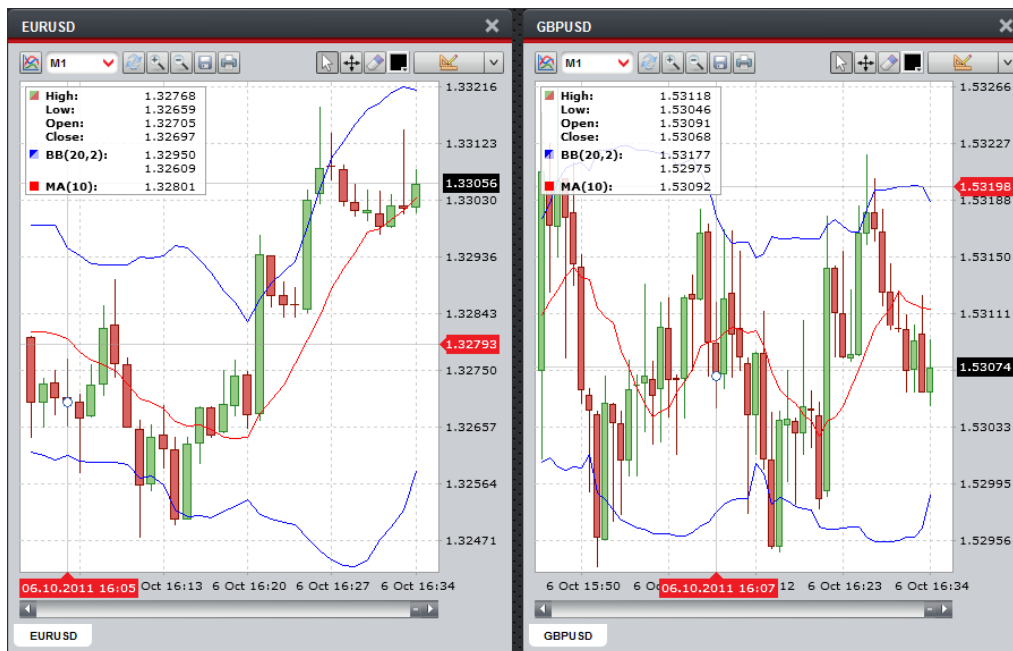
3.1.4 Spot Panes

The Spot Panes provide you with a direct link to your selected trades which you wish to have quick access to. On a Spot Pane you are given the *Buy* or *Sell* option with the current rates. The spot pane also states the spread. From the pane you can choose your *volume* then, by clicking the **Buy** or **Sell** buttons, place your order. You will receive a notification saying your order was approved, this indicates your order was successfully placed.



3.1.5 Charts

This is where your selected charts will be displayed and functional from, your charts area is easily visible and is located in the top section of your screen.



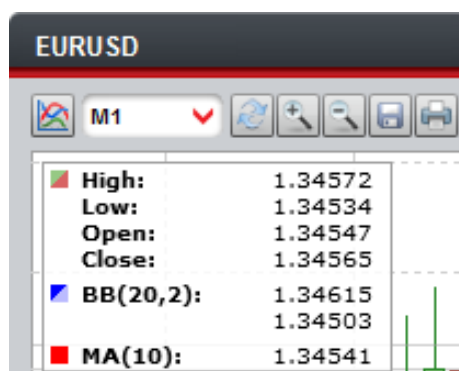
3.1.6 Adding a Chart

To add a chart you must select the 'Chart' option which can be found within the options menu on the left hand side of each of the Symbols.

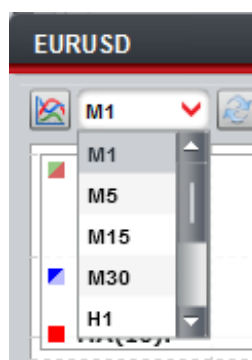
Marketwatch			
Symbol	Bid	Ask	
EURUSD	1.34531	1.34545	10:34:15
GBPUSD	1.55166	1.55181	10:34:15
USDCHF	0.91976	0.91993	10:34:16
Instant Order	6.631	76.639	10:34:16
Pending Order			
Chart	8070	0.98086	10:34:16
Add to Favorites	3799	1.03812	10:34:15
Information			
NZDUSD	0.77434	0.77464	10:34:16
EURCHF	1.23735	1.23756	10:34:15

3.1.7 Using Charts

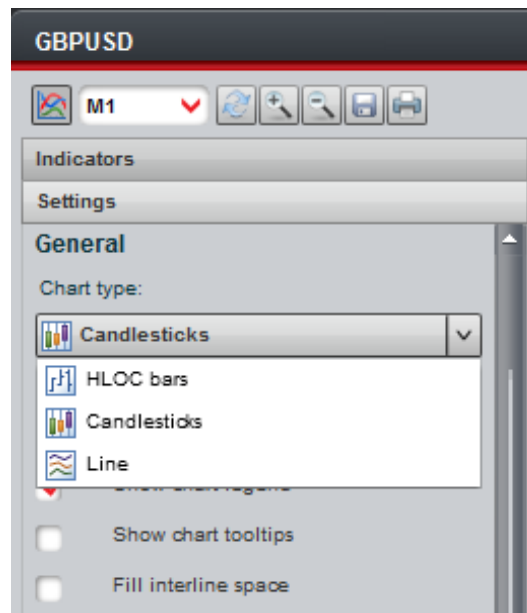
There are several features of the chart which you must be aware of. On each chart the instruments symbol is stated on the top of the window. In the example below it is **GBPUSD**.



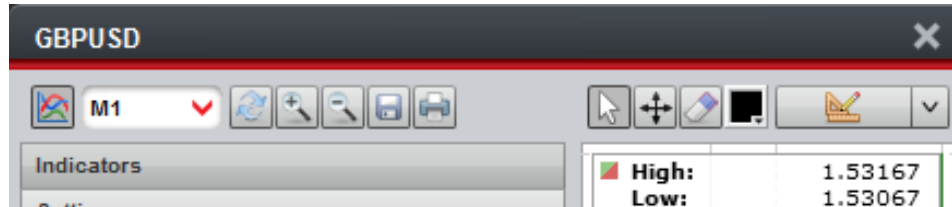
A drop down menu in the top left corner of the chart area, allows the choices for time periods you can select; they range from **M1** = 1 minute, to **MN1** = 1 Month.




You can select from 3 different types of *candlestick*, *bars* or a *line chart*:





3.1.8 Chart Options



 - Settings

 M1 - Time Frame

 - Refresh

 - Zoom in

 - Zoom out

 - Full screen


 - Save

 - Print


 - Cursor

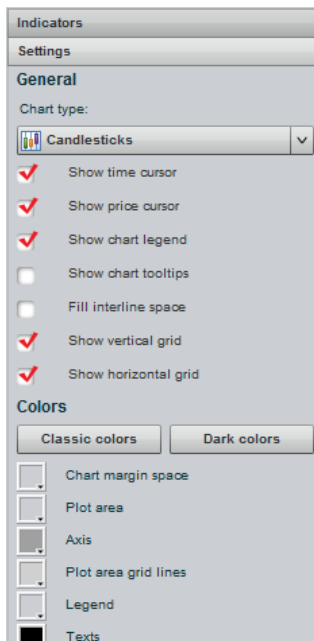
 - Move

 - Erase

 - Drawing Color

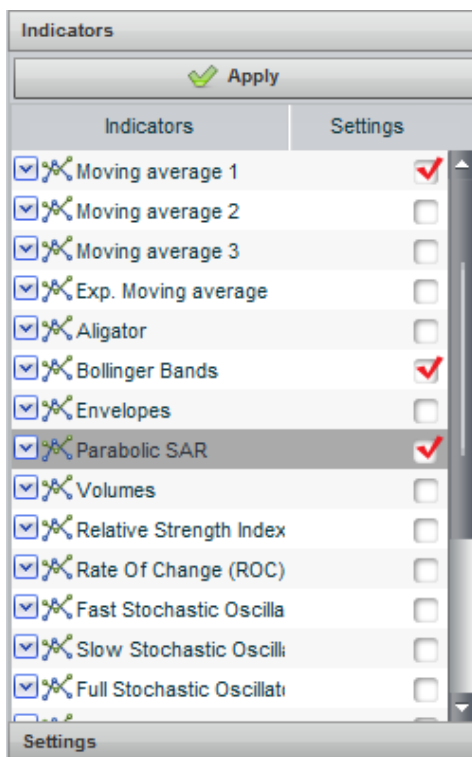
 - Drawing options

Within the Settings menu  you will have access to all your General settings options, such as Chart type and Colors.

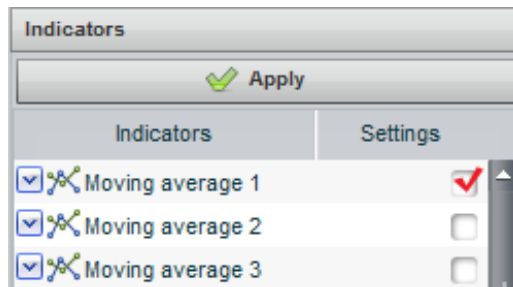


3.1.9 Indicators

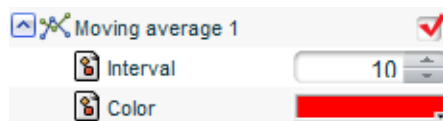
Also within this menu you will find a list of Indicators, as shown below:



In order to add an Indicator to your chart, simply check the box of your desired Indicator. When removing your Indicator, simply uncheck the box.



In order to change the settings for your Indicator, click on the arrow on the left hand side of the listed Indicator.



Using your mouse, if you hover over any area of a chart it will tell you certain information regarding that trade for that specific time period.



The scroll bar along the bottom of your chart allows scrolling horizontally (left and right), moving the chart back and forwards in time.

4.0 Trades

The **Trades** tab shows the full order details of your open positions and pending orders, as well as allowing you to modify orders. It also indicates your **balance**, **equity**, **margin**, **free margin**, and **margin level**.

Order	Time	Type	Vol	Symbol	Price	S / L	T / P	Price	Commission	Swap	Profit (USD)
17183152	06.10.2011 16:50	buy	0.10	GBPAUD	1.5879	0.0000	0.0000	1.5876	0.00	0.00	-2.89
17182363	06.10.2011 16:32	buy	0.10	EURGBP	0.86891	0.00000	0.00000	0.86979	0.00	0.00	13.48
17120091	03.10.2011 22:48	sell	1.00	EURUSD	1.32281	0.00000	0.00000	1.33302	0.00	-26.75	-1 021.00
Balance: 100 019 340.73 Equity: 14 118 957.65 Margin: 1 609.06 Credit: 0.00 Free: 100 016 694.50 / 6215944.25 %											-1 037.16

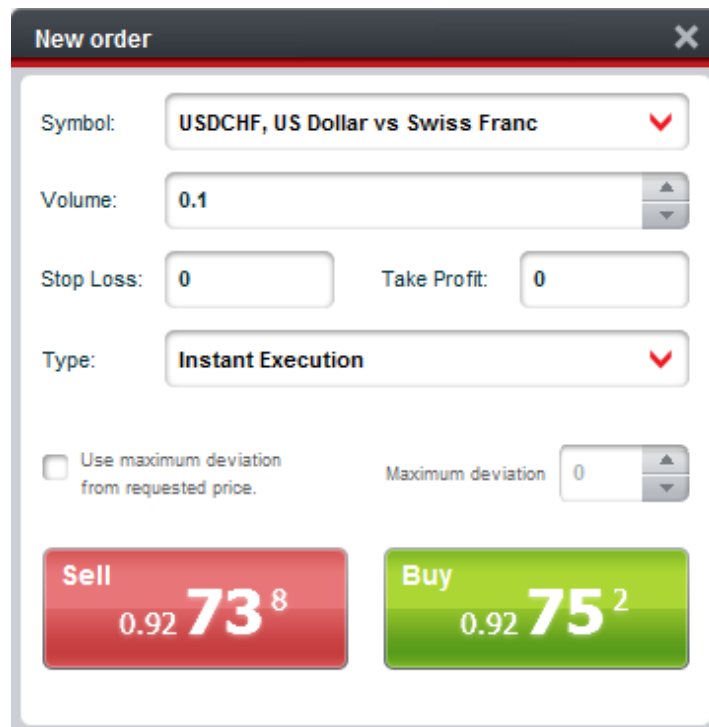
Trades History News Mail Journal

4.1 Opening a New Order

Opening a trade is pretty simple and can be done by various methods...

1. *Double-clicking* any instrument in the **Market Watch** window
2. *Using the Spot Panes* within the **Favorites** Section

Clicking or *double clicking* depending on where you are opening a new order will bring you to a screen like below. When placing an order must select the *Symbol*, set the *Volume*, you can optionally set a *Stop Loss* or *Take Profit* for the order, and then you must decide whether you want to create an *Instant Execution* or a *Pending Order*.



New order [X]

Symbol: USDCHF, US Dollar vs Swiss Franc [v]

Volume: 0.1 [▲] [▼]

Stop Loss: 0 [] Take Profit: 0 []

Type: Instant Execution [v]

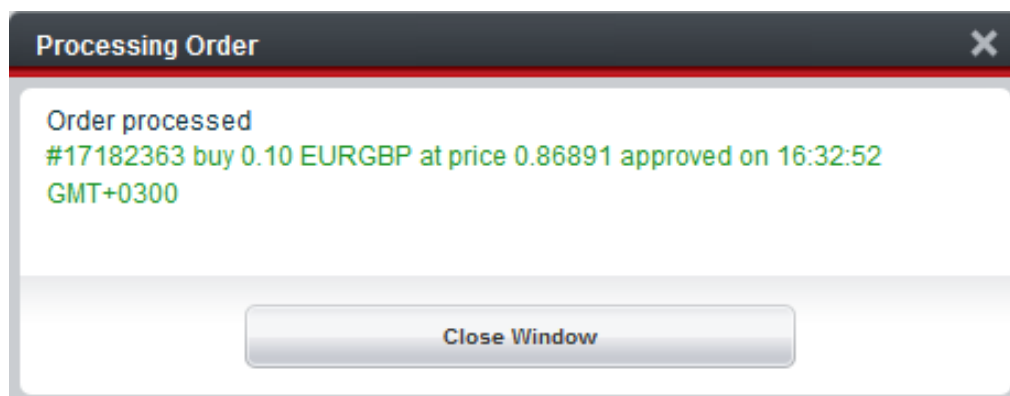
Use maximum deviation from requested price. Maximum deviation: 0 [▲] [▼]

Sell 0.92 **73**⁸ **Buy** 0.92 **75**²

4.2 Instant Execution

Being an **Instant Execution** you must then choose whether to **‘Buy’** or **‘Sell’** by clicking the corresponding button, you also have the option of using and specifying a *Maximum Deviation* on instant executed orders.

Once clicking on **Buy** or **Sell**, you will know if your order was successfully placed when a message appears stating the price, order number, symbol, and the time it was approved at. You can then click on **Close Window** and carry on trading.



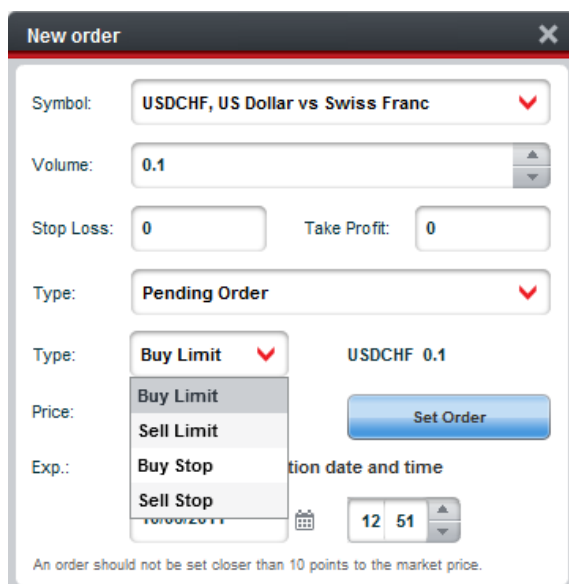
Processing Order [X]

Order processed
 #17182363 buy 0.10 EURGBP at price 0.86891 approved on 16:32:52
 GMT+0300

[Close Window]

4.3 Pending Orders

Being a **Pending Order** you do not have the ability to Buy or Sell or use the maximum deviation. Instead you must...

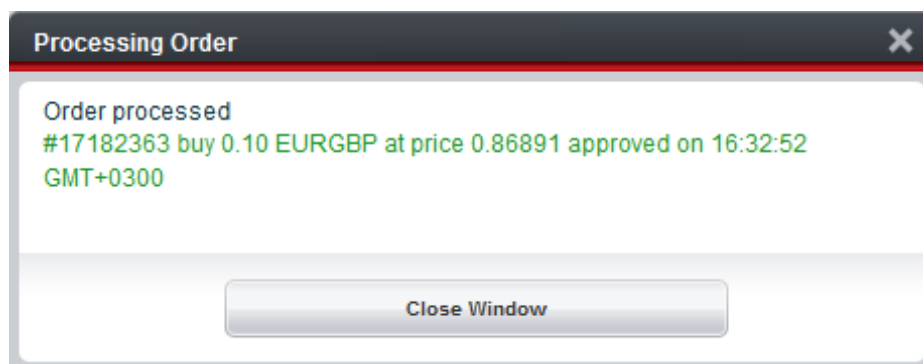


...select it to be:

- Buy Limit*
- Sell Limit*
- Buy Stop*
- Sell Stop*

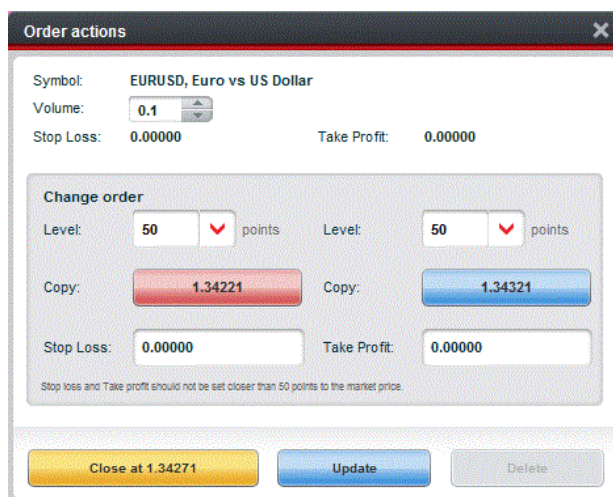
Then you must specify the **'Price'** you wish the pending order to be executed at. You can also optionally set an **'Expiration'**, which is the date for the pending order to delete if it doesn't reach its Price. When finished select the **'Set Order'** button.

If the order is successfully placed, you will receive a message like so where it will state the price, order number, symbol, and the time it was approved at. You can then click on **Close Window** and carry on trading.



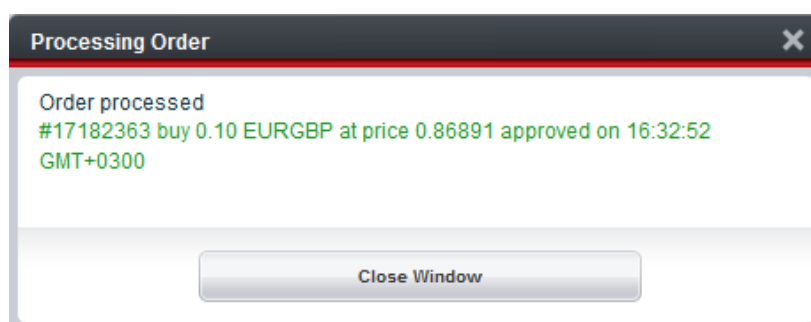
4.4 Modify/Close an Order

From within the **Trades** section you can modify/close any orders. In the case of updating an open order simply double-click on your chosen order and a window as shown below will appear.

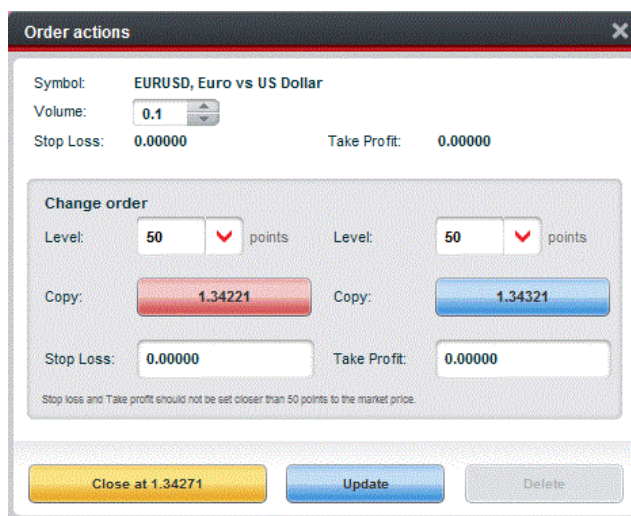


The aspects you can choose to update are the *Stop loss* and *Take Profit*, their *Levels*, and it also allows you to copy the precise rate of that trade and current moment in time directly from the platform. Once making your desired changes you must then click **'Update'**. When successfully updated you should receive a confirmation screen.

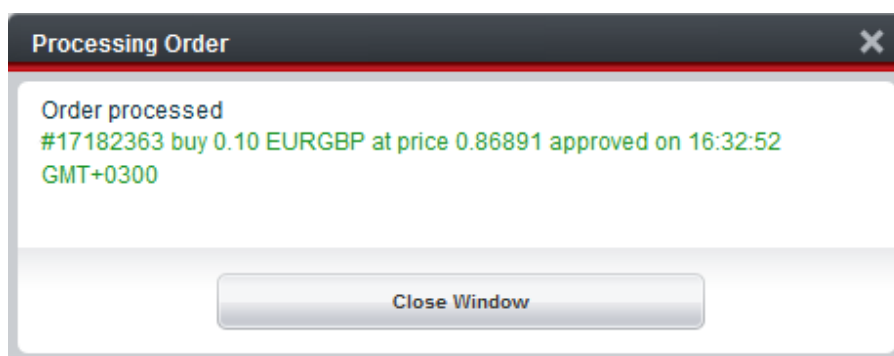
To close an order all you must to do is click the **Close at "current rate"** button at the bottom-left corner of the window. If successfully closed, you will see a confirmation screen like this. You can then close this window and carry on trading.



4.5 Partially Close Order



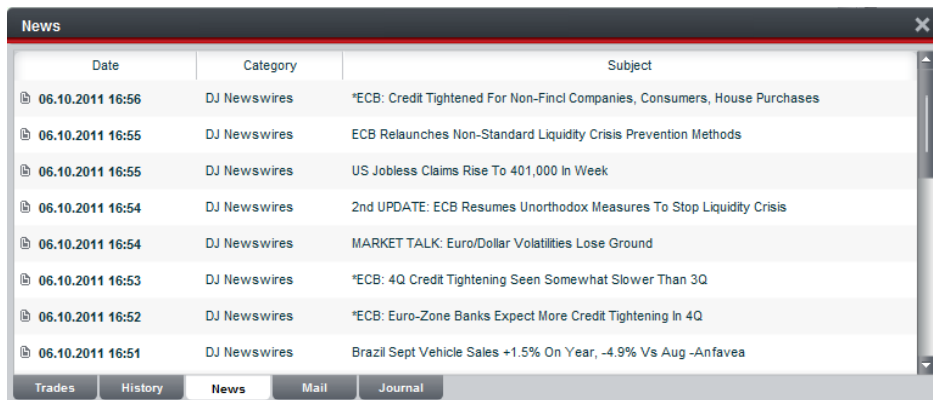
The partial close option allows you to close part of your trade, leaving the remaining Volume open. In order to partially close your trade, the Volume must be changed within the Volume box. Once making your desired changes you must then click **Partial close at “price”** button. When successfully updated you should receive a confirmation screen.



Please note that during a partial close, you are not able to modify your Stop loss or take profit levels. You may however change these once you have completed the close, using the modify/close order option.

5.0 News

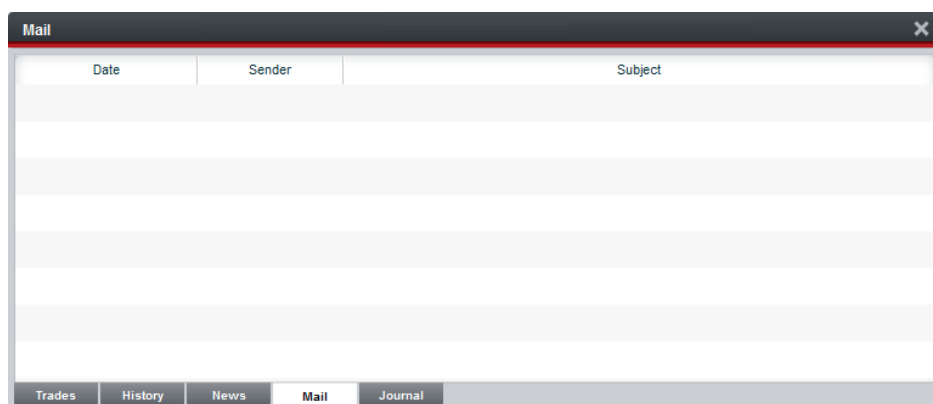
The News window shows you Live Market News.



Date	Category	Subject
06.10.2011 16:56	DJ Newswires	*ECB: Credit Tightened For Non-Fincl Companies, Consumers, House Purchases
06.10.2011 16:55	DJ Newswires	ECB Relaunches Non-Standard Liquidity Crisis Prevention Methods
06.10.2011 16:55	DJ Newswires	US Jobless Claims Rise To 401,000 In Week
06.10.2011 16:54	DJ Newswires	2nd UPDATE: ECB Resumes Unorthodox Measures To Stop Liquidity Crisis
06.10.2011 16:54	DJ Newswires	MARKET TALK: Euro/Dollar Volatilities Lose Ground
06.10.2011 16:53	DJ Newswires	*ECB: 4Q Credit Tightening Seen Somewhat Slower Than 3Q
06.10.2011 16:52	DJ Newswires	*ECB: Euro-Zone Banks Expect More Credit Tightening In 4Q
06.10.2011 16:51	DJ Newswires	Brazil Sept Vehicle Sales +1.5% On Year, -4.9% Vs Aug -Anfavea

6.0 Mail

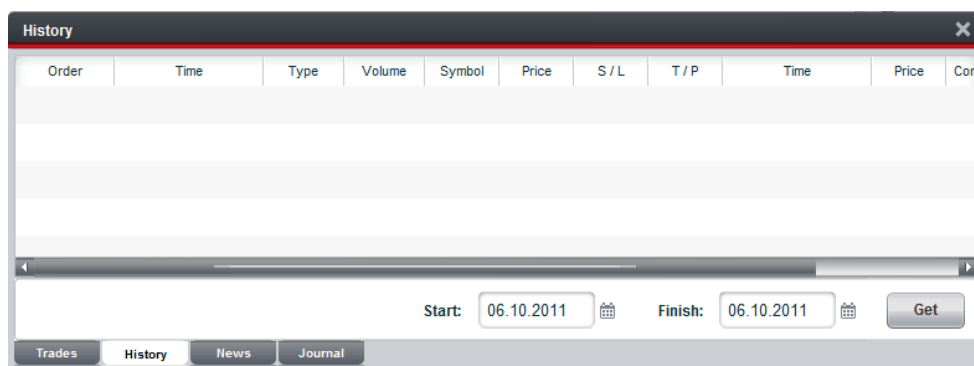
The mail tab of the platform shows all MT4 internal Mail.



Date	Sender	Subject

7.0 History



Your trade history gives you a comprehensive run down of all your closed orders, removed pending orders and deposits/withdrawals. You can access it by pressing **'History'** which is located next to the **'Trade'** tab.



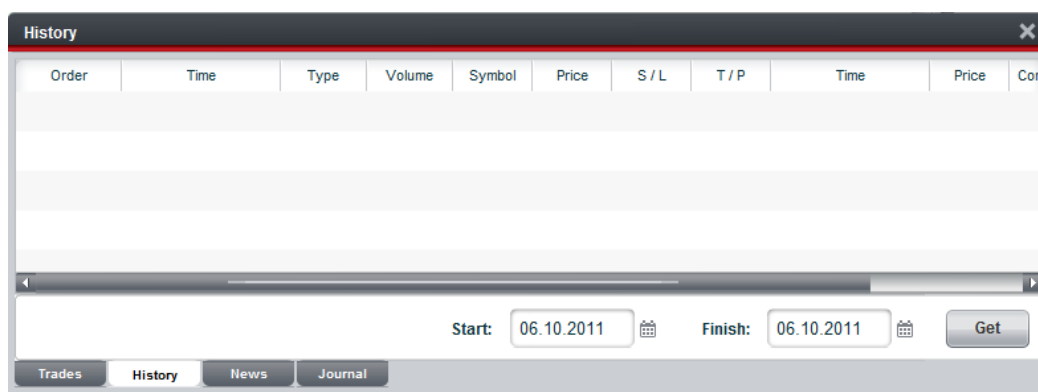
Order	Time	Type	Volume	Symbol	Price	S / L	T / P	Time	Price	Cont

Start: 06.10.2011 Finish: 06.10.2011 Get

Inside your trade history you can run a report on any period of time. All you must to do is enter the **Start** date and **End** date and then press '**Get**'.

Start:  Finish: 

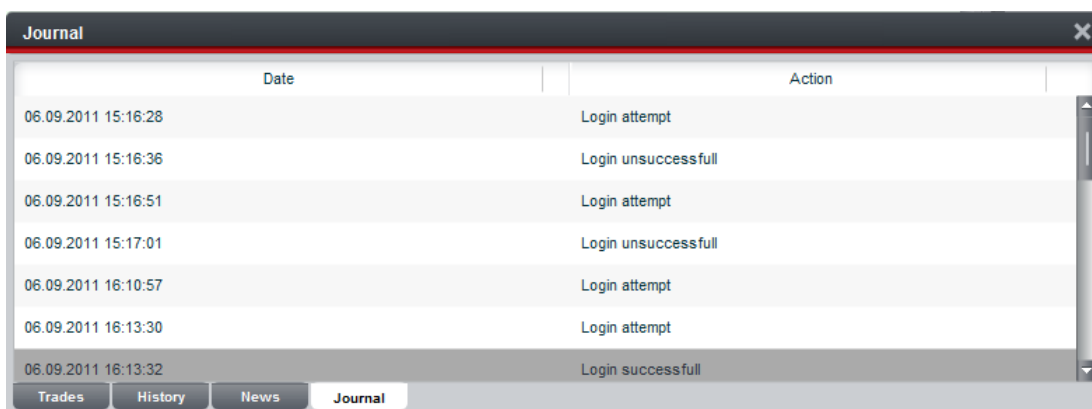
Your results of your designated date range will appear. You can sort the results by any column with a single-click on the header of the column.



Underneath all your orders at the very bottom of the report you will notice the **Profit, Deposit** and **Withdrawal** for your specified period.

8.0 Journal

The Journal Window provides all event records from your platform, such as log in's, trades placed and trades closed.



9.0 Customizing your Web Trader

The Web Trader is fully customizable; you build it the way you want! Complete with Drag and Close paneling which can be closed or opened at any time, by using the main tabs situated at the very top of the Web Trader screen.



To return to the default layout, simply choose the **'Restore Layout'** option from the **'Misc.'** menu.

